

## Installation instructions

### Exterior components Cradle 35 cm and 53 cm (incl. Eco) flat roof flashing



Version: 2025-02



## Contents

|  |   |
|--|---|
| Step 1 – Create Openings .....                                       | 4 |
| Step 2 – Fit the flashing insulator .....                            | 4 |
| Step 3 – Mount the roof flashing.....                                | 5 |
| Step 4 – Fit top tube (with lens) .....                              | 5 |
| Step 5 – Fit the glass daylight collector to the roof flashing ..... | 6 |

## Foreword

### Safety

- Always observe the safety instructions for the materials and tools to be used.
- Always wear the appropriate personal protective equipment (gloves, safety goggles etc.).
- We would suggest that any roof works is completed by an experienced roofer.
- Always have any electrical works carried out by a certified electrician.
- Please note that the installation works is carried out at your own risk.

### Warranty

- Non-electrical components are covered by a 10 year manufacturer's warranty against any manufacturing defects.
- Please retain the original proof of purchase to validate the product warranty.
- Any costs associated to the installation of any replacement parts covered under the warranty remain at the expense of the purchaser.
- Our terms and conditions are available upon request.

### Disclaimer

Techcomlight Limited expressly disclaims any liability for any unexpected additional expense arising as a result of condensation or any water damage resulting from condensation, installation not in accordance with Techcomlight Limited's installation guide/s or any other external influences beyond the control of Techcomlight Limited. Techcomlight Limited cannot be held liable for damage to structures caused as a result of making openings and installing the product supplied. Techcomlight assumes no responsibility or obligation for the failure of an architect, contractor, installer or building owner to comply with all applicable laws, ordinances, building codes, energy codes, fire and safety codes and requirements, and adequate safety measures.

Installation instructions reserved. No rights can be derived from this publication.

## Step 1 – Create Openings

Decide from the inside where you want to install the Powerdaylight.

**Note:** Take into account the construction and any existing pipes or electrical wires!

Make a neat, round opening with the diameter below in the roof construction.

Powerdaylight 35 cm: between Ø 370 - Ø 380 mm

Powerdaylight 53 cm: Ø 550 mm

For a round ceiling diffuser, the opening in the ceiling must be made with the same diameter as mentioned above.

For a square ceiling diffuser, a neat, square opening must be made in the ceiling with the dimensions below:

Powerdaylight 25 cm Justfrost: 267 x 267 mm

Powerdaylight 25 cm Recessed: 245 x 245 mm

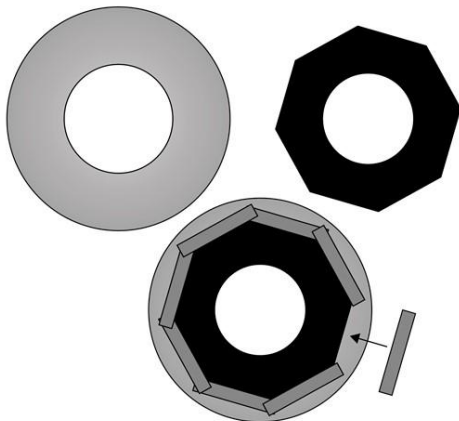
Powerdaylight 35 cm Justfrost: 367 x 367 mm

Powerdaylight 35 cm Recessed: 345 x 345 mm

## Step 2 – Fit the flashing insulator

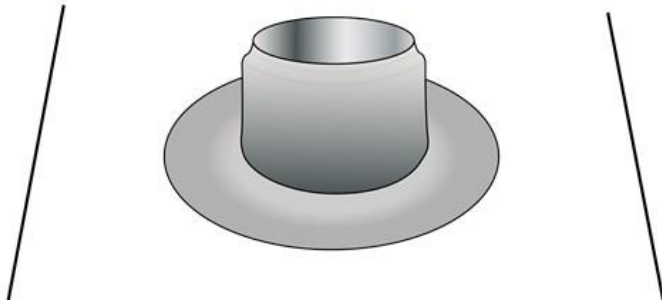
Degrease the underside of the roof flashing. Centre the flashing insulator over the underside of the roof flashing and tape it into position with the aluminium tape provided as shown below.

Note: The flashing insulator is an important part to prevent thermal bridging!



### Step 3 – Mount the roof flashing

Centre the roof flashing over the opening created and secure the flashing down with suitable screws (not supplied). Apply the appropriate roofing material over the flange of the flashing, ensuring a watertight seal. Optional ready-made counter flashings are available for various roof covering types (SBS bitumen, Resitrix EPDM or European EPDM) at an additional cost.



### Step 4 – Fit top tube (with lens)

The top tube (with the transparent lens already attached to the top of it) must now be carefully pushed down through the flashing insulator as far as it will go into the roof flashing. The tube will then suspend in place.



## Step 5 – Fit the glass daylight collector to the roof flashing

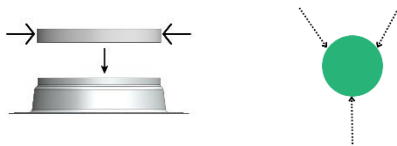
The glass daylight collector is provided with a sealing strip on the inside of the aluminium ring. Therefore, the glass daylight collector can be installed directly down onto the roof flashing.

Orient the glass plate:

The reflective grid within the daylight collector should be oriented so that the central (smaller) reflective segments of the grid (which face down into the daylight tube) point south. The image below will help you determine the correct orientation.



Once in place, fix the glass daylight collector into position with the three screws supplied through the steel ring and into the roof flashing. If we were informed of the desired system length in advance, the ceiling diffuser would have been provided pre-assembled to the tubing, therefore in this case the installation is now complete.



### Continuation of the installation instructions:

For the remaining installation instructions (interior tube and ceiling diffuser) we refer you to the separate installation instructions for the specific chosen ceiling diffuser type. If we were informed of the desired system length in advance, the ceiling diffuser would have been provided pre-assembled to the tubing, therefore in this case the installation is now complete.